



Reading your meter

Frequent and accurate meter readings will help you keep control of your bills.

Always read left to right and when in doubt give the lower figure.

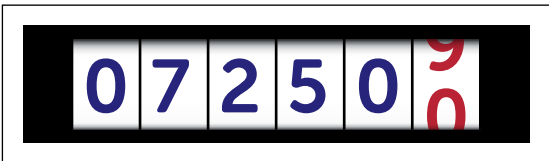
Meters are usually found just inside your front door or under the stairs. Gas meters may be outside – triangular keys to access the box can be purchased from most DIY shops.

If you're having difficulties reading your meter please call us free on 0808 281 2222 for advice.

If you think your meter is inaccurate or unsafe contact us. Most meters should have a ten year life span and we're responsible for visual checks during meter reads every two to three years.

ELECTRICITY

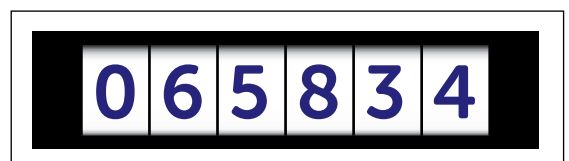
Single rate meter



Write down the five numbers shown from left to right. Ignore the last number which may be shown in red.

This reading would be **07250**.

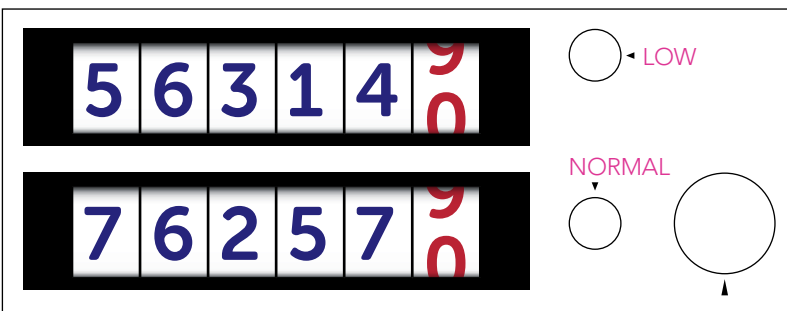
Single rate 6 digital



Write down the six numbers shown from left to right.

This reading would be **065834**.

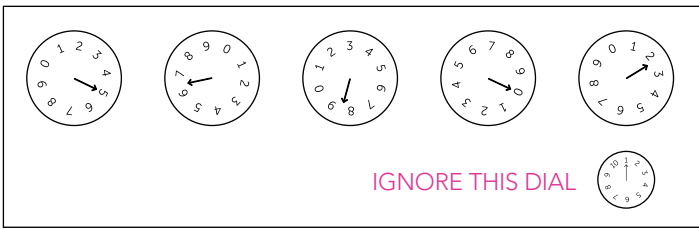
Two rate meter



For top and bottom rows, write down the numbers shown left to right. Ignore the last numbers which may be shown in red.

This reading would be **56314, 76257**.

Electricity dial meter and Gas dial meter



Read the first five dials from left to right, ignoring the dial marked 1/10.

Write down the number that the pointer has just passed – use the lower of the two numbers either side of the pointer. If the pointer is between 9 and 0 write down 9.

Please be aware that each dial turns in the opposite direction to the one before it, so check which way each turns.

This reading would be **56802**.

GAS

Digital metric meter



Write down the five numbers shown from left to right. Ignore the numbers after the decimal point which may be shown in red.

This reading would be **00267**.

Imperial meter



Write down the four numbers shown from left to right. Ignore the numbers shown in red.

This reading would be **2594**.

Submitting your readings

You can give us your meter readings anytime online at www.bristol-energy.co.uk or by calling us free on **0808 281 2222**. You can also email your reads to meterreads@bristol-energy.co.uk. Always useful if you can include your account number when you contact us.

Bristol Energy Limited

100 Temple Street, Bristol BS1 6AG www.bristol-energy.co.uk
Registered in England and Wales No. 09135084 VAT No. 220 428 253

A company controlled by Bristol City Council under the relevant legislation.